

# Interdisciplinary Team Science Addressing Modifiable Cancer Risk & Protective Factors *Research Team*



**Core Lead**

**Eva M. Moya, Ph.D., LMSW**  
Associate Professor,  
COHS, Dept. of Social Work



**Co-Investigator**

**Margie E. Padilla, PharmD, CDE, BCACP**  
Clinical Associate Professor,  
School of Pharmacy



**Co-Investigator**

**Gabriel Fietze, Ph.D.**  
Clinical Instructor,  
School of Pharmacy



**Co-Investigator**

**Kristin L. Gosselink, Ph.D.**  
Associate Professor,  
Burrell College of  
Osteopathic Medicine  
Las Cruces, NM



**Co-Investigator**

**Silvia Chavez-Baray, Ph.D.**  
Lecturer / Post Doc,  
COHS, Dept. of Social Work



**PhD Research Associate**

**Jacquelin Cordero, MSW**  
NCI Fellow & DrPH Student, University of Texas  
Health Science Center at Houston  
El Paso, TX



**PhD Research Associate**

**Cynthia Wittenburg, MS**  
UTHealth PhD Student  
UTEP Public Health P



**Program Manager**

**Priscilla Guevara, MPH**  
COHS, Dept. of Social Work  
BBRC



**Project Coordinator**

**Marina Ramirez, MSW**  
COHS, Dept. of Social Work  
Ed-Tech HPV



**Project Coordinator**

**Roselie Medina, MA**  
COHS, Dept. of Social Work  
Ed-Tech HPV



**Research Associate**

**Lourdes Perez Moreno, BS**  
COHS, Dept. of Social Work  
Ed-Tech HPV



**Community Worker**

**Matilde Saenz, CHW**  
COHS, Dept. of Social Work  
BBRC



**Community Worker**

**Bertha A. Aguilar, CHW**  
COHS, Dept. of Social Work  
BBRC



**Research Associate**

**Osinachi T. Ibilah, MSW**  
COHS, Dept. of Social Work  
BBRC



**Graduate Research Assistant**

**Stephen P. Nuñez**  
School of Pharmacy  
BBRC



**Graduate Research Assistant**

**Alyssa A. Martinez, BS CHES**  
School of Pharmacy  
BBRC



**Graduate Research Assistant**

**Fabian Orozco, BSW**  
School of Pharmacy  
BBRC



**Graduate Research Assistant**

**Jessica Ayala, BSW**  
COHS, Dept. of Social Work  
SEED Grant/BUILD Scholars



**Graduate Research Assistant**

**Alondra Avila, BA**  
COHS, Dept. of Social Work  
SEED Grant



**Undergraduate Research Assistant**

**Araceli Garcia**  
COHS, Dept. of Social Work  
SEED Grant

# Interdisciplinary Team Science Addressing Modifiable Cancer Risk & Protective Factors



## Rationale

- Cancer continues to be one of the leading causes of morbidity and mortality world-wide and the second leading cause in the U.S.
- Approximately 45% of cancer morbidity and mortality is associated with *modifiable cancer risk factors*.
- These factors can be internal such as behavioral, lifestyle, and health screening; or external like provider recommendations, coordinated services, insurance coverage, and accessibility.

# *Interdisciplinary Team Science Addressing Modifiable Cancer Risk & Protective Factors*



## **Objectives**

1. Focus on **cancers associated with modifiable risk factors**.
  2. Assess **healthcare access, availability, and appropriateness**.
  3. **Identify and map navigation** to connect members to health and social services.
- 
1. **Advance social and behavioral health science research, propel interdisciplinary research in other health disparity areas.**

# Interdisciplinary Team Science Addressing Modifiable Cancer Risk & Protective Factors



## Approach

- Utilize a **community-based team science approach**, integrating community and student-based capacity building interventions to advance preventative and comprehensive cancer care.
- **Collaborate on 4 complimentary cancer projects**—based in El Paso. These are designed and interwoven to **understand critical issues and implement interventional strategies** related to HPV vaccine uptake, early screening processes for HPV-associated cancers, health literacy, and overall cancer awareness of youth and young adults within resource scarce areas of El Paso County.



# Interdisciplinary Team Science Addressing Modifiable Cancer Risk & Protective Factors



## Complimentary Cancer Research Projects

*Explore and understand the cancer continuum. Cancer are non-specific cancer type*

1. EdTech HPV (R01 grant; 2016 – 2021) technology-focused project, implements and assesses a community-based educational program to increase the rate of HPV vaccination completion among children (ages 11 – 17) of Mexican-origin families.
2. HPV across the Lifespan (R01-type grant; 2019 – 2024) assesses HPV-related knowledge, attitudes and practices, barriers and facilitators of vaccine uptake to develop, implement, and assess targeted interventions to improve vaccination, screening and health literacy across the lifespan (ages 18 – 65).
3. C-KAP (U54 pilot grant; 2020 – 2021) explores young adults (ages 18 – 39) non-specific type cancer knowledge, attitude's and practices in San Elizario and Socorro, Texas.
- 4.) Student IDR Pipeline: Training & Capacity Building (IDRE pilot grant; 2020 - 2021) increases research mentorship/team building activities of multi-level students and scholars interested in impactful learning and practice experiences in interdisciplinary community-based research.

# Interdisciplinary Team Science Addressing Modifiable Cancer Risk & Protective Factors



## Cancer Project 1.

### EdTech-HPV: A Community Approach using Education and Technology to Increase HPV Vaccination

Aragones, A., (PI); Moya E. M., (Co-I); Tonda, J., (Co-I)

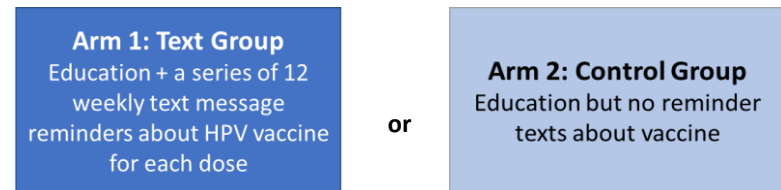
#### Background

- Led by Abraham Aragones, MD, MS—Immigrant Health & Cancer Disparities Service Dept. of Psychiatry and Behavioral Sciences, Memorial Sloan Kettering Cancer Center
- A multi-state, multi-site, community-based project operating in Mexican Consulates in New York City, Las Vegas, Chicago and El Paso to increase HPV vaccination rates among children of Mexican immigrants through education and text messaging.

**Goal:** To develop a multi-level 18 statistical predictive model on vaccination series completion

#### Current Efforts & Future Directions

- Aim 1: Compare HPV vaccination series completion among children whose parents complete an education session



- Aim 2: Identification of factors that contribute to parental decision for HPV vaccination completion
  - Administration of Progress Surveys (N = 200) participants per site
- 5<sup>th</sup> year ending in May 2021.

This work was supported by Grant R01MD011508, National Institute of Minority Health and Health Disparities (R01).

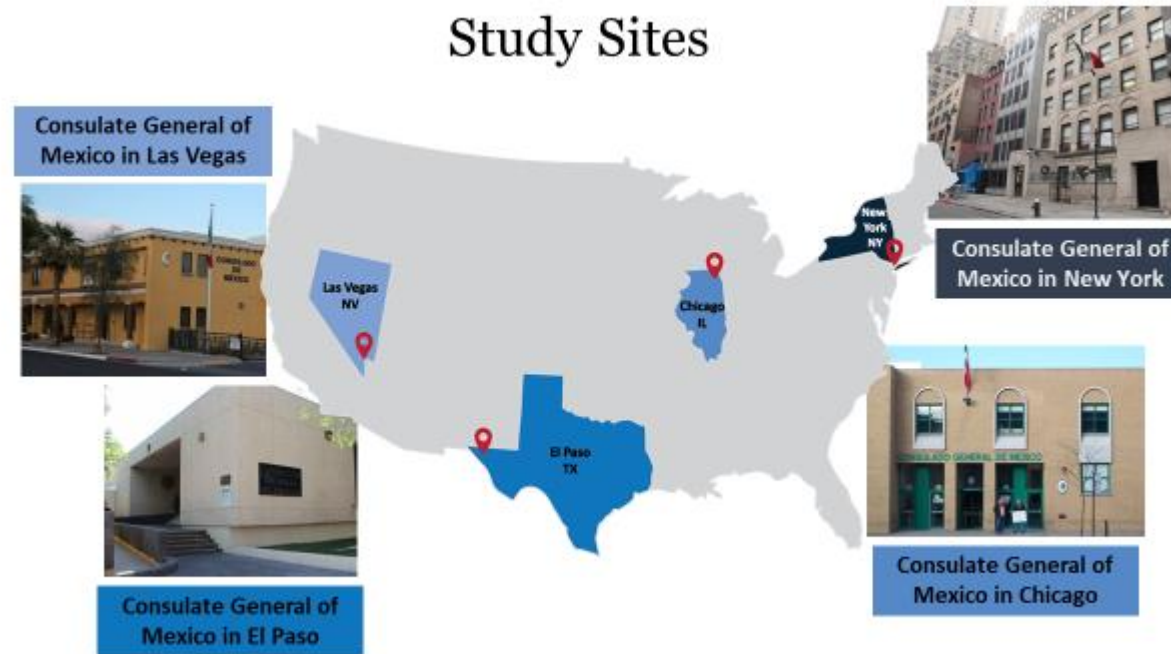
# Interdisciplinary Team Science Addressing Modifiable Cancer Risk & Protective Factors



## Cancer Project 1.

EdTech-HPV: A Community Approach using Education and Technology to Increase HPV Vaccination

Aragones, A., (PI); Moya E. M., (Co-I); Tonda, J., (Co-I)



This work was supported by Grant R01MD011508, National Institute of Minority Health and Health Disparities (R01).

# Interdisciplinary Team Science Addressing Modifiable Cancer Risk & Protective Factors



## Cancer Project 2.

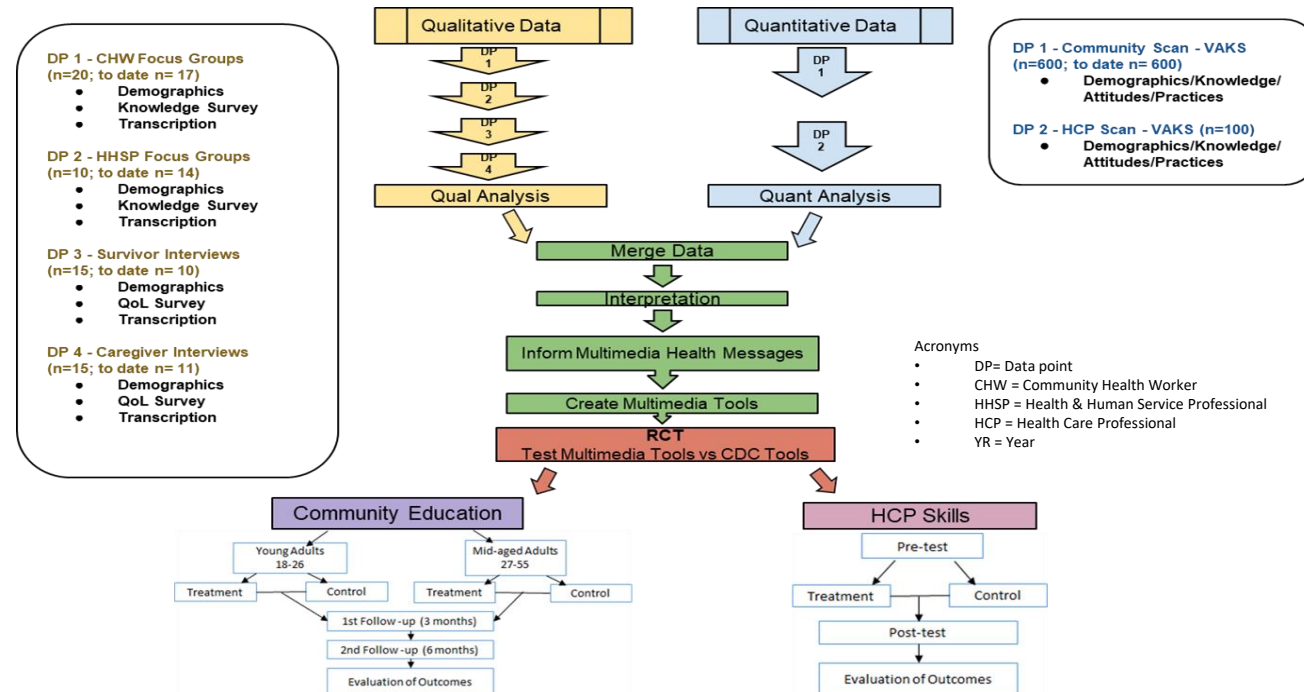
HPV Across the Lifespan: Implementing Innovative & Strategic Approaches to Prevent And Mitigate the Deleterious Effects of HPV Across the Lifespan of Hispanics of Mexican Origin

Moya, E., (Core Lead/PI); Padilla, M., (Co-I); Frietze, G., (Co-I); Gosselink, K., (Co-I)

### Background

- Led by Robert Kirken, PhD; Principal Director—Research Center at Minority Institutions and Borders Biomedical Research Center—UTEP BBRC
- 1<sup>st</sup> behavioral research project under BBRC, working towards addressing issues of Hispanic health disparities unique to our region. Three phases: 1) community needs/scan of HPV impact, 2) creating educational tools informed by community and professional members, and 3) testing the impact of such tools.

### Current Efforts & Future Directions



This work was supported by Grant 2U54MD007592 from the National Institutes on Minority Health and Health Disparities (NIMHD), a component of the National Institutes of Health (NIH).

# Interdisciplinary Team Science Addressing Modifiable Cancer Risk & Protective Factors



## Recruitment Flyers : *HPV Across the Lifespan and C-KAP*

HUMAN PAPILLOMAVIRUS (HPV) MITIGATION AND CANCER PREVENTION IN HISPANICS PROJECT

**RESEARCH VOLUNTEERS NEEDED!**



**Participate in our focus group**

Contact Priscilla Guevara at  
(915) 747 - 6313  
pguevara2@utep.edu

A \$30 gift card will be provided upon participation

We look forward to your help!

Research supported by Grant 2U54MD007592 from the National Institutes on Minority Health and Health Disparities (NIMHD), a component of the National Institutes of Health (NIH).

HUMAN PAPILLOMAVIRUS (HPV) MITIGATION AND CANCER PREVENTION IN HISPANICS PROJECT

ARE YOU A HEALTH PROFESSIONAL? OR  
ARE YOU A HUMAN OR SOCIAL SERVICE PROFESSIONAL?

**RESEARCH VOLUNTEERS NEEDED!**



**Participate in our focus group**

Contact Priscilla Guevara at  
(915) 747 - 6313  
pguevara2@utep.edu

We look forward to your help!

**ELIGIBILITY:**

- Be a Health or Human Service Provider
- Be 18 years and older
- Attend a 1.5 hour session

A \$30 gift card will be provided upon participation

Research supported by Grant 2U54MD007592 from the National Institutes on Minority Health and Health Disparities (NIMHD), a component of the National Institutes of Health (NIH).

HUMAN PAPILLOMAVIRUS (HPV) MITIGATION AND CANCER PREVENTION IN HISPANICS PROJECT

**RESEARCH VOLUNTEERS NEEDED!**



**Interested in participating?**

Contact Priscilla Guevara at  
(915) 747 - 6313  
pguevara2@utep.edu

We look forward to your help!

**TO PARTICIPATE IN THE SURVEY YOU MUST:**

- Be between 18 - 65 years old
- Have 30 to 45 minutes to complete questionnaire

A \$25 gift card will be provided upon participation

Research supported by Grant 2U54MD007592 from the National Institutes on Minority Health and Health Disparities (NIMHD), a component of the National Institutes of Health (NIH).

Human PapillomaVirus (HPV) Mitigation and Cancer Prevention in Hispanics Project

ARE YOU A CURRENTLY PRACTICING OR IN TRAINING HEALTHCARE PROFESSIONAL?

**RESEARCH VOLUNTEERS NEEDED!**



**Interested in participating?**

Contact Kristin Gosselink at  
kgosselink@bcmnm.org

We look forward to your help!

**ELIGIBILITY:**

- Currently Practicing or In Training Healthcare Professional
- Between the ages of 18 - 65 years
- Have 30 to 45 minutes to complete questionnaire

A \$25 gift card will be provided upon participation

Research supported by Grant 2U54MD007592 from the National Institutes on Minority Health and Health Disparities (NIMHD), a component of the National Institutes of Health (NIH).

**CUÍDATE, EL PASO:**  
Protecting Our Community against Human Papillomavirus (HPV) Project—  
Proyecto Protegiendo a Nuestra Comunidad Contra El Virus del Papiloma Humano (VPH)



Are you someone who has experienced a Human Papillomavirus (HPV)-associated cancer diagnosis?  
Have you cared for someone with an HPV-associated cancer?

If the answer is yes to either of these questions, you could qualify to participate in the study.


**Eligibility Criteria**

- 18 years of age or older
- Have 60 - 120 minutes to speak with one of our trained professionals
- History of an HPV associated cancer diagnosis OR
- Have cared for or supported someone with an HPV associated cancer

Participants will receive a \$30 gift card for their time  
Enrollment ends September 30, 2020

For more information, call Priscilla Guevara at (915) 747-6313  
or email [cuidate@utep.edu](mailto:cuidate@utep.edu)



Research supported by Grant 2U54MD007592 from the National Institutes on Minority Health and Health Disparities (NIMHD), a component of the National Institutes of Health (NIH). IRB Study Number: 1441462.0.

This work was supported by Grant 2U54MD007592 from the National Institutes on Minority Health and Health Disparities (NIMHD), a component of the National Institutes of Health (NIH).  
and supported by UTEP Interdisciplinary Research and Education Program (IDRE), Seed Funding

# Interdisciplinary Team Science Addressing Modifiable Cancer Risk & Protective Factors



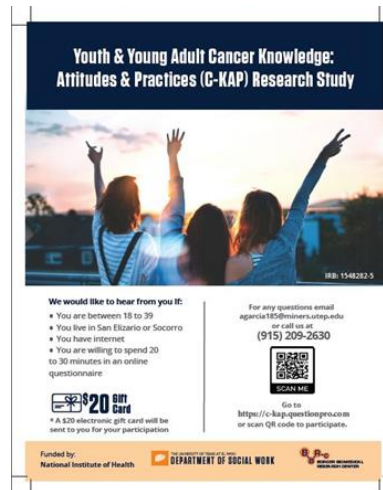
## Cancer Project 3.

**C-KAP:** *Youth and young adult cancer knowledge, attitudes and practices pilot study*

Moya E. M., (PI); Chávez -Baray, S. (Co-I/Director), Araceli Garcia, RA

### Background

- Pilot-project (U54) exploring young adults (18 – 39 yrs) cancer KAP in San Elizario and Socorro, Texas.
- Focus: prevention of cancer in youth/young adults to report documented findings to key informants and decision makers.



### Current Efforts & Future Directions

- 125 participants are expected to complete the survey using QuestionPro software.
  - <https://www.questionpro.com/t/AQ5CqZiUnf> Spanish
  - <https://www.questionpro.com/t/AQ5CqZiTwX> English
- Data collection is expected to be completed by early-November.
- Data transcription: November-December
- Data analysis: January-February (2021).
- Preparation of grant submission(s) Spring 2021
- Article report & manuscript development: February-April (2021).

This work was supported by Grant 2U54MD007592 from the National Institutes on Minority Health and Health Disparities (NIMHD), a component of the National Institutes of Health (NIH).

# Interdisciplinary Team Science Addressing Modifiable Cancer Risk & Protective Factors



## Project 4.

### Student IDR Pipeline: Training & Capacity Building on Food and Housing Insecurities

Moya, E., (PI) & Crouse, M., (Co-I)

#### Background

- To increase research mentorship/team building activities for undergraduate & graduate students interested in research experiences and practices.
- Partnership with the Campus Office of Undergraduate Research Initiatives (COURI)
- Facilitates the ability of emerging, junior scholars, and accomplished faculty of the IDR team to develop and enhance their mentorship capabilities through collaboration with UTEP academic leaders, advisors, and other supporting units.

**Goal:** Explore the food and housing insecurity (FHI) impact among (n=2,757) UTEP college students

#### Current Efforts & Future Directions

- Manuscript of cross sectional study among (n=2,757) UTEP students in submitted mode (November. 2020). **Authors:** Moya, E., Crouse, M., Wagler, A., Schober, G., Ayala, J., & Garcia, A. Interdisciplinary team representing social work, mathematics, education, rehabilitation sciences and psychology.
- 2<sup>nd</sup> Study IRB recently approved and scheduled to be launched in mid October
- Preliminary Findings:
  - **720 (26%)** participants know of any UTEP student who was homeless
  - **1,269 (48%)** experienced food shortage and are unable to afford more food
  - **1,488 (57%)** could not afford to eat balanced meals
  - **1,100 (42%)** ate less since there was not enough money for food
  - **1,000 (37%)** went hungry due to not having enough money for food

# Interdisciplinary Team Science Addressing Modifiable Cancer Risk & Protective Factors



## Project 4.

Student IDR Pipeline: Training & Capacity Building on Food and Housing Insecurities (FHI)

Moya, E., (PI), Crouse, M., (Co-I), Wagler, A., (Co-I), Schober, G., (Co-I), Ayala, J. (RA)

### Second FHI Study

**Purpose:** Examine the FHI among students during the COVID-19 pandemic

**Design:** Cross-sectional study

**Online survey will address:** 1) General characteristics, 2) Housing security, 3) Food security, and 4) Impacts of the COVID-19 pandemic

Research questions:

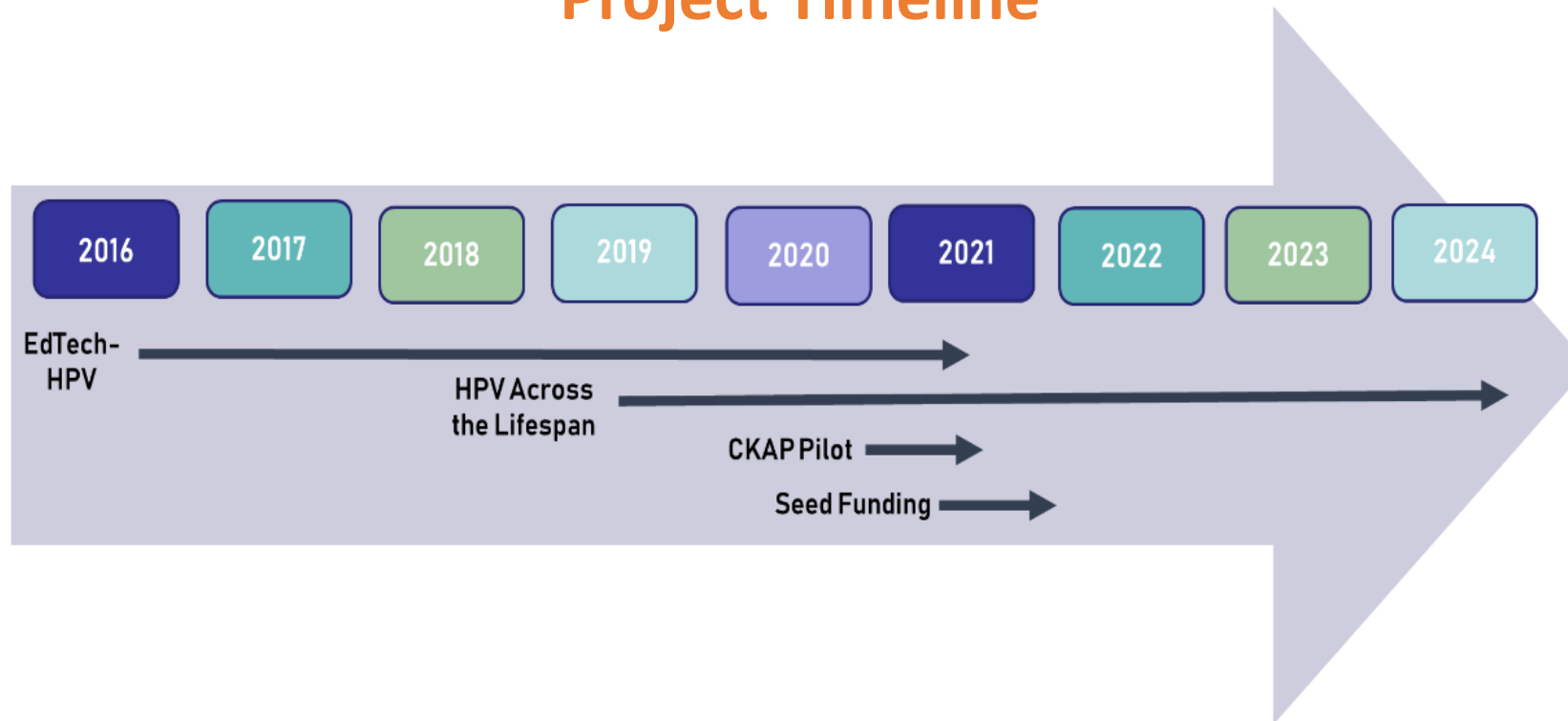
- What is the proportion of UTEP students who report housing insecurity?
- What is the proportion of UTEP students who face food insecurity?
- What is the proportion of UTEP students impacted by COVID-19?



# *Interdisciplinary Team Science Addressing Modifiable Cancer Risk & Protective Factors*



## Project Timeline



# Interdisciplinary Team Science Addressing Modifiable Cancer Risk & Protective Factors



## Expected Collaborative Outputs/Outcomes

### Cancer Projects 1 & 2

- To identify critical information related to HPV vaccine uptake, early screening processes for HPV-associated cancers, and HPV literacy in Mexican-origin Hispanic females and males.
- Provide novel insight and direction for (1) the reduction of the deleterious effects of HPV in Hispanics of Mexican origin, (2) normalize the HPV vaccine such that all eligible age groups complete the vaccine series and are protected against cancer associated HPV strains, and (3) establish UTEP and the El Paso region as critical drivers of behavioral research.

### Cancer Project 3

- Inform cultural and linguistic competent education strategies with the purpose of engaging youth & young adults to adopt lifestyle behaviors aimed at reducing their cancer risk

### Cancer Project 4

- Create mentoring and meaningful research experiences to include training in community-based research frameworks, methods like *Photovoice* to document health inequalities and strategies to address, and participating in COURI and BUILD Scholar symposiums where student present their research work.

# *Interdisciplinary Team Science Addressing Modifiable Cancer Risk & Protective Factors*



## **Grant Submissions**

Title: Implementing Community-based Approaches to Increase SARS-CoV-2 Testing among an Underserved and Vulnerable Hispanic Population

Funding Agency: National Institutes of Health

Total federal funds requested: \$1,057,000.00

PI: Robert A. Kirken

Co-Investigators: Gabriel A. Fietze, Michael J. Kenney, Bibiana M. Mancera, Eva M. Moya, Margie E. Padilla

Submission date: September 8, 2020

SEBI behavioral grant

Title: Identifying and assessing behavioral factors within a Vulnerable Population of Hispanics to Increase COVID-19 Testing, Prevention Strategies, and future vaccine uptake

Funding Agency: National Institutes of Health

Total federal funds requested: \$942,944.00

PI: Robert A. Kirken

Co-Investigators: Gabriel A. Fietze, Bibiana M. Mancera, Eva M. Moya, Margie E. Padilla

Submission date: September 8, 2020

Title: Use of Photovoice to make visible mental health of transgender migrants in Ciudad Juarez and El Paso

Funding: PIMSA

Approved budget: \$10,000

PI's: Eva Moya & Marisela Gutierrez (UACJ)

Co-PI's: Silvia Chavez-Baray (UTEP), Perla Chaparro (EPISD), Oscar Esparza & Hector Padilla (UACJ), Maria Ines Barrientos (COLEF)

# *Interdisciplinary Team Science Addressing Modifiable Cancer Risk & Protective Factors*



## **Potential Impacts**

The team will strengthen its **collective capacity to design research studies** and experiences to address **multi-generational communities** of Hispanics, primarily of Mexican-origin, and increases the power of our investigations and the likelihood of obtaining statistically significant outcomes.

- Project findings are likely to generalize to other **Hispanic and communities of color**, medically underserved, or rural populations experiencing similar health concerns regarding modifiable cancer risk and protective factors.
- **Engaging and supporting current and future health providers** working in underserved regions provides additional skills and exposure for students to develop into researchers to effectively **investigate health disparities in underserved populations**.
- Generate, publish and **disseminate** peer-review publications and **leverage grants** to expand research and translate findings.



# Questions? Comments?



THE UNIVERSITY OF TEXAS AT EL PASO  
SCHOOL OF PHARMACY



BURRELL COLLEGE  
OF OSTEOPATHIC MEDICINE  
at  
New Mexico State University



Memorial Sloan Kettering  
Cancer Center™



UTHealth®  
The University of Texas  
Health Science Center at Houston  
School of Public Health

*Interdisciplinary Team Science Addressing Modifiable Cancer Risk & Protective Factors*